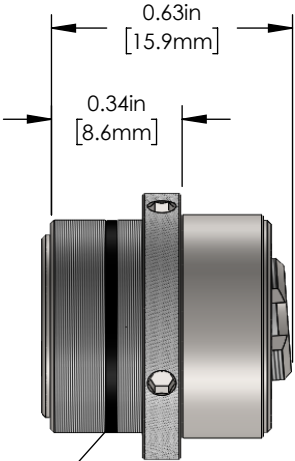
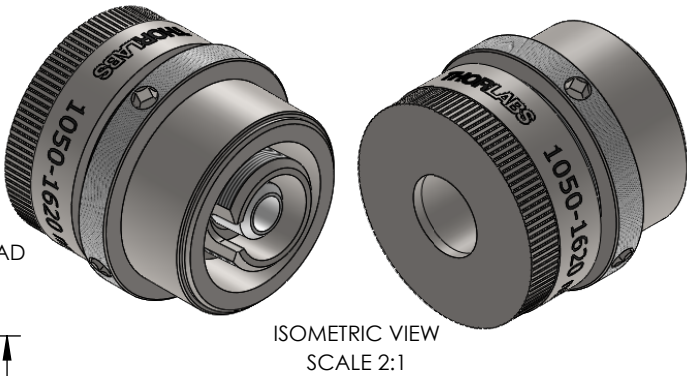
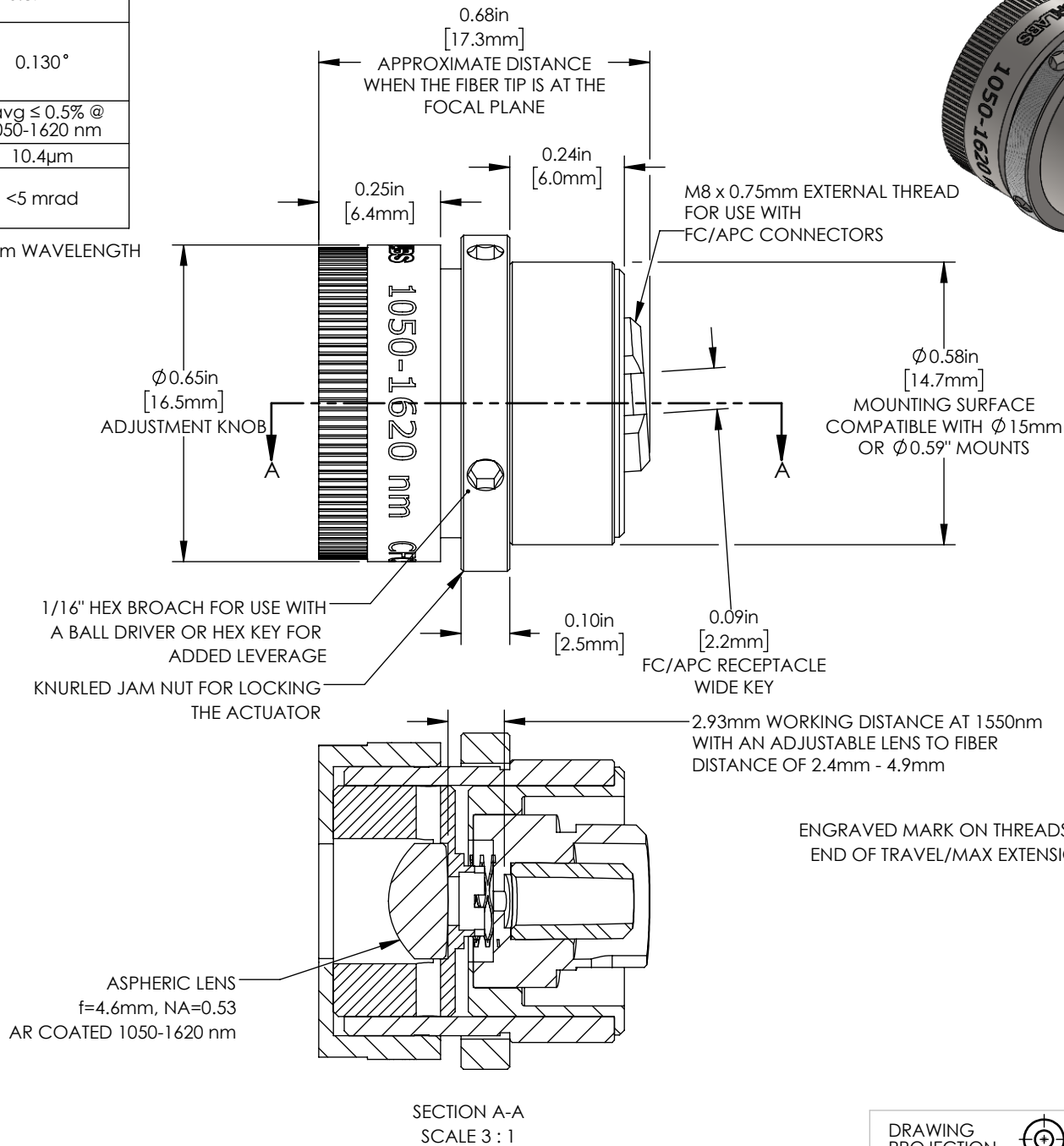


THEORETICAL 1/e ² OUTPUT BEAM DIAMETER*	0.87mm
THEORETICAL FULL ANGLE BEAM DIVERGENCE*	0.130°
AR COATING	Ravg ≤ 0.5% @ 1050-1620 nm
INPUT MFD	10.4μm
POINTING STABILITY DURING COLLIMATION	<5 mrad

*CALCULATED AT 1550nm WAVELENGTH
WITH SMF-28-J9 FIBER


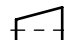


SHOWN WITHOUT ADJUSTMENT KNOB
FOR REFERENCE ONLY

NOTE:
ALL COLLIMATORS ARE ROUGH ALIGNED AT 1064nm
Ø4.9mm LENS CLEAR APERTURE

FOR INFORMATION ONLY
NOT FOR MANUFACTURING PURPOSES

INCLUDED BUT NOT SHOWN:
RUBBER DUST CAP

DRAWING PROJECTION				THORLABS www.thorlabs.com	
	NAME	DATE		FC/APC ADJUSTABLE COLLIMATOR, f = 4.6mm, 1050-1620 nm	
DRAWN	ES	13/MAR/20		MATERIAL N/A	
APPROVAL	BR	18/MAR/20			
COPYRIGHT © 2020 BY THORLABS				ITEM # CFC5A-C	
VALUES IN PARENTHESIS ARE CALCULATED AND MAY CONTAIN ROUND OFF ERRORS					
				APPROX WEIGHT	0.21 kg